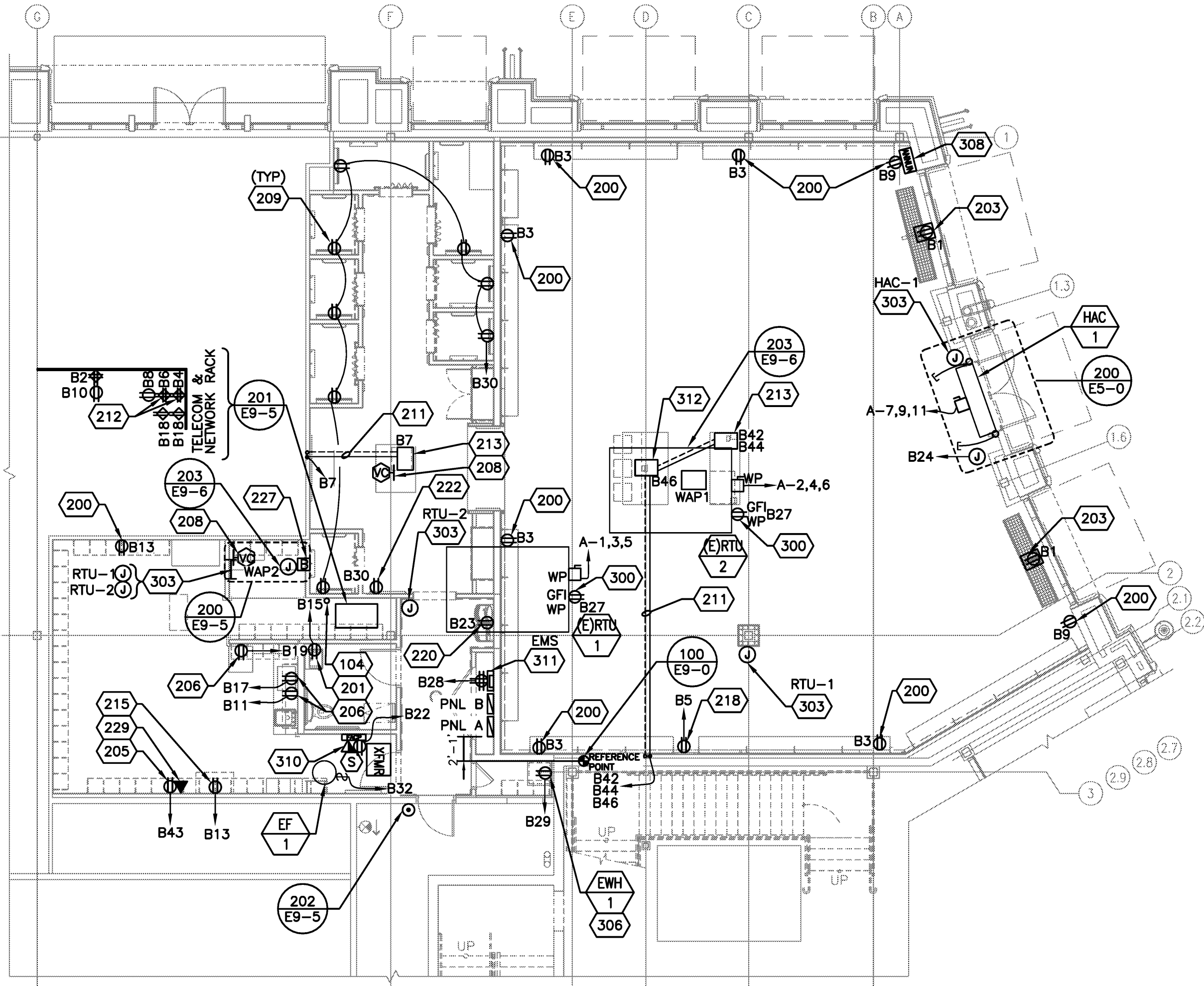


FIRE ALARM SYSTEM SHOWN ON ELECTRICAL DRAWINGS ARE FOR SCHEMATIC AND BIDDING PURPOSES ONLY. FIRE ALARM SYSTEM CONTRACTOR SHALL SUBMIT FIRE ALARM DRAWINGS, EQUIPMENT CUT SHEETS, ETC. PER LOCAL CODE AND NFPA72 TO LOCAL AUTHORITIES HAVING JURISDICTION AND OWNER'S INSURANCE COMPANY FOR APPROVAL PRIOR TO ORDERING EQUIPMENT. THE FIRE ALARM CONTRACTOR SHALL BE RESPONSIBLE FOR ENSURING COMPATABILITY BETWEEN THE FIRE ALARM SYSTEM AND THE LANDLORD CENTRAL SYSTEM WHEN REQUIRED TO CONNECT TO THE LANDLORD CENTRAL SYSTEM. ENGINEER WILL NOT APPROVE FIRE ALARM DRAWINGS, EQUIPMENT CUT SHEETS, ETC. INCLUDE IN BID ALL COSTS FOR PERMITS AND FEES. ALL PANELS AND PERIPHERAL DEVICES SHALL BE STANDARD PRODUCT OF SINGLE MANUFACTURER AND SHALL DISPLAY THE MANUFACTURER'S NAME ON EACH COMPONENT.

PROVIDE COVER PLATES FOR FIRE ALARM PULL STATIONS IF PERMITTED BY CODE.

NOTES:

1. RECEPTACLES, DATA JACKS, AND COVERPLATES SHALL BE WHITE, UNLESS OTHERWISE NOTED.
2. DATA WIRE LENGTH NOT TO EXCEED 300 FEET PER EIA/TIA 569 STANDARDS.
3. IN TOILET ROOMS, ALL MOTION SENSORS, RECEPTACLES, ETC. SHALL BE MOUNTED WITH CENTERLINES AT 44" TO AVOID CONFLICT WITH BEADBOARD TRIM.
4. ALL OUTLETS AND SENSORS IN SALES AND FITTING AREAS SHOULD BE LOCATED ON THE SIDES OF THE FEATURE WALL FRAMES, NOT THE FACES.



ATH 'STATION PARK' - POWER CODED NOTES SCHEDULE						
Coded Note	Type	Manufacturer/Model	Color	Mount Height	Use	Notes
104	Place "as-built" electrical drawings in drawing tube					
200	Duplex - UNO	See Specifications	White	18" AFF	General	Sales Area: tamper resistant.
201	GFI Duplex	See Specifications	White	44" AFF	Toilet Room	
203	Duplex	See Specifications	White	12" Above Glass	General	Install vertically on vertical face of storefront.
205	Duplex/Quad	See Specifications	White	See architectural	Battery Chargers/Phones	
206	Duplex	See Specifications	White	See architectural	Microwave Refrigerator Above Counter Recept	
208	Install (2) volume controls, (1) volume control in the manager's desk, and (1) at the Fitting Room concierge table. Coordinate exact location with architectural elevations.					
209	Duplex	See Specifications	White	See architectural	Fitting Room Mirrors	Install one duplex outlet per mirror. Refer to architectural details.
211	Coordinate core sawcut location for underground conduits with GC and landlord's representative prior to proceeding with any flooring work. Floor to match existing floor finish after installation of conduits. Run 3/4" conduit for data & 3/4" conduit for power. Sales floor display window floor boxes only require power conduit.					
212	Quad	See Specifications	White	See detail	Network Rack	
213	Floor Box	4 Gang Floor Box with (2) duplexes and (6) data ports in single floor box. Provide all necessary parts as required for installation. (I.E. Hubbell CF84G30RCR or equal)	Satin Nickel	Floor	Cashwrap/CGT	
215	Duplex	See Specifications	White	See architectural	Ship from Store	
218	Duplex	See Specifications	White	18" AFF	Steamer	Label "STEAMER".
220	Duplex	See Specifications	White	18" AFF	Water Cooler	
222	Duplex	See Specifications	White	See architectural	Illuminated Mirror	
227	Locate buzzer on wall beside thermostats, transformer to be mounted above ceiling.					
229	Single Gang	See Specifications	Grey	See architectural	Voice - Cordless phone	
300	GFI Duplex	See Specifications	White	Mounted to Unit	HVAC Convenience	Provided with unit. Circuited by electrical contractor.
303	J-box	BELL plastic single gang box #5320-0, or equal.	Grey	48" AFF	HVAC Control	Rectangular box with non-round corners. Fitting room conduits shall be routed within walls to nearest wall going to strucutre.
306	GFI	See Specifications	White	96" AFF	Water Heater	
308	Fire alarm annunciator panel to be furnished and installed by the fire alarm contractor specified at GC's expense.				Panic Hardware	
310	Dedicated fire alarm phone line located at the telephone board. Connect to fire alarm control panel.					
311	Lighting Contactors and EMS panel					
312	2-Gang Floorbox	Hubbell S1PFB Floor Box, Hubbell #S1SPDUSL mounting plate WITH ISF2BK 2-port data plate, and Hubbell #S1CFCAL coverplate, or equal	Satin Nickel	Floor	Sales floor display window area/Backwrap	Duplex and phone ports in single floor box.

POWER PLAN

SCALE:
1/8" = 1'-0"

NEW STORE



GAP INC.
STORE DEVELOPMENT
2 FOLSOM STREET
SAN FRANCISCO, CA 94105

ORACLE I.D.:

140261

STORE NUMBER:

7341

STORE LOCATION:

STATION PARK

230 NE PROMONTORY
SPACE C-120
FARMINGTON, UT 84025

DESIGN TYPE:

DERBY B

GENERATION:

21Q34

PROTOTYPE DATE:

1/8/2021

OPENING:

2021

ARCHITECT INFO:



ARCHITECT OF RECORD:

MARIAH MEYER
8131 METCALF AVE
SUITE 300
OVERLAND PARK, KS 66204

www.brrarch.com

TEL: 913-262-9095
FAX: 913-262-9044

CONSULTANT INFO:



8345 LENEXA DRIVE, SUITE 300
LENEXA, KS 66214
TEL 913.742.5000 FAX 913.742.5001

WWW.HENDERSONENGINEERS.COM

2050004241
UT. CORPORATE NUMBER: 4977264-0143
09/30/21

PROFESSIONAL STAMP:

THIS DOCUMENT IS RELEASED FOR THE PURPOSE OF PRELIMINARY SUBMITTAL WILLIAM R. WINSTON LICENSE # 11811162-2202
IT IS NOT TO BE USED FOR CONSTRUCTION PURPOSES.

ISSUE TYPE:

LL/PERMIT/BID: 02/19/21

REVISIONS:

DRAWN BY: HEI

A/E JOB NUMBER: 65011072

TITLE SHEET:
POWER PLAN

SHEET NUMBER:

E1-0